

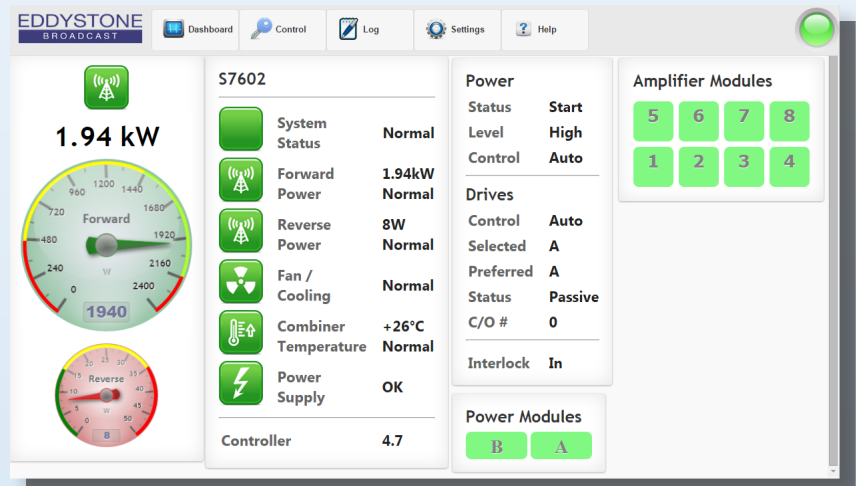
E2023-05

Transmitter Controller with Remote Monitoring / Control Unit / SNMP

Provides complete transmitter monitoring and control. Access internal dashboard/logs and help features via built in LCD screen, local or remote IP network on any device via a web browser, or the standalone access point.

Features

- View Forward Power / Reverse Power / PSU Status / Combiner Temperature / Individual Amplifier Parameters / Interlock Status all from easy to read dashboard.
- Control Start / Mute / Low / High via authenticated access
- Drive Status and Control
- One touch install and configuration
- Access via LAN / WAN
- Built in secured access point for local viewing
- View system logs and diagnose faults
- Add engineer logs during site visits
- Customisable user authentication
- Automated set-up with auto TX identification
- No single point of failure
- Access on board user manuals
- Automated updates (when connected to web)
- Optional SNMP for integration into proprietary software



Specifications

Connectivity	Ethernet / Wi-Fi
Local Access Point	Yes (with DHCP)
SNMP	Optional
GPRS	Optional
Remote Upgrade / USB	Yes
User Installable	Yes
Control Parameters	Start / Mute / High / Low / Drive Preference
Specification subject to change	

