

E2023-05
Transmitter Controller

Contents

1. L6507-01 Retro-Fit Installation Guide	
1. Important Notes	- Page 3
2. Instructions	- Page 3
3. Install Visual Aids	- Page 4
2. TCP/IP Instructions	
1. Connecting to the E2023-05	- Page 5
2. Connecting to the E2023-05 – Internal Wi-Fi access point	- Page 5
3. Connecting to the E2023-05 - Local Ethernet	- Page 5
4. Changing the Network Settings	- Page 5
5. Default Credentials	- Page 7
6. Add/Change User Settings	- Page 7
7. Add/Change Group Settings	- Page 7
8. Upgrade System	- Page 8
9. Viewing the Transmitter Dashboard	- Page 8
10. Controlling the Tx from the Dashboard	- Page 8
11. Logging an Event	- Page 9
12. Change Wi-Fi Access Point Settings	- Page 9
13. Accessing the Help Menu	- Page 10
3. SNMP Guide	
1. Overview	- Page 12
2. Parameters	- Page 12
i. Config Parameters	- Page 12
ii. Tables	- Page 12
iii. Set Commands	- Page 12
iv. Response List	- Page 12
v. Settable Values	- Page 13
vi. MIB Tree	- Page 14
vii. OID Strings	- Page 15

L6507-01 Retro-Fit Installation Guide

IMPORTANT NOTES:

Holding in the **MODE** button on any E2023 controller keypad will display its **COM port baud rate** on the LCD. The baud should be set to 9600.

Currently all E2023 controllers are despatched set to 9600.

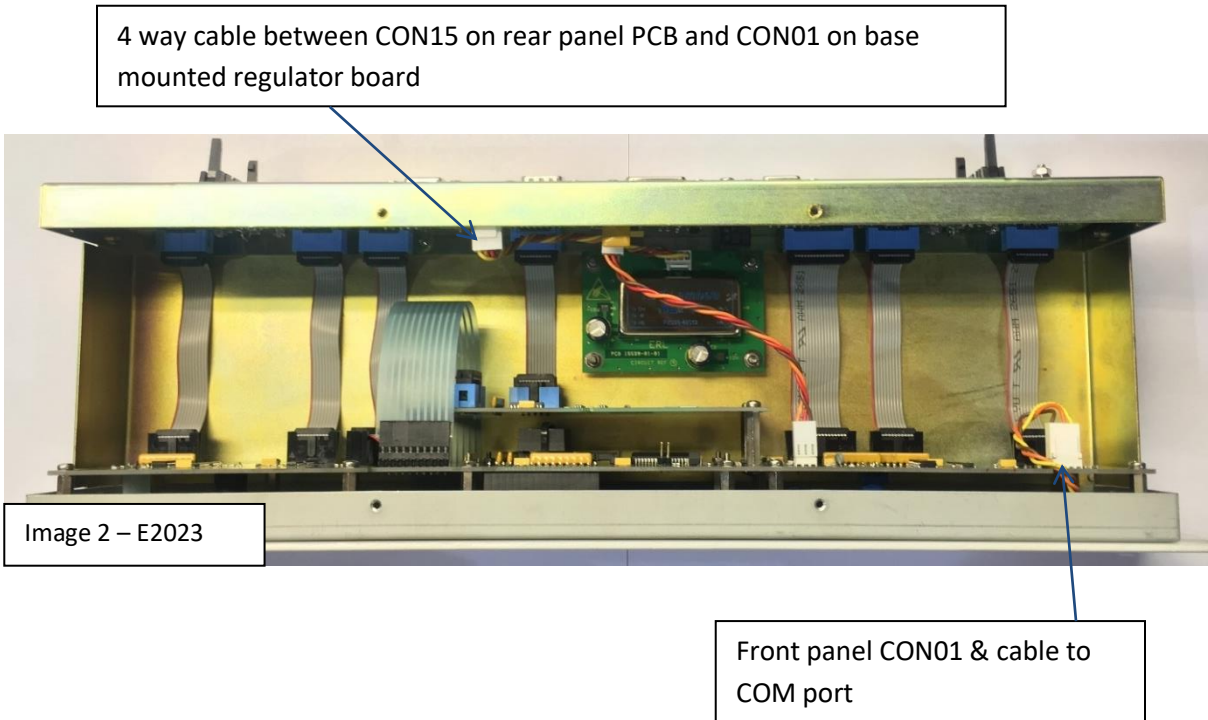
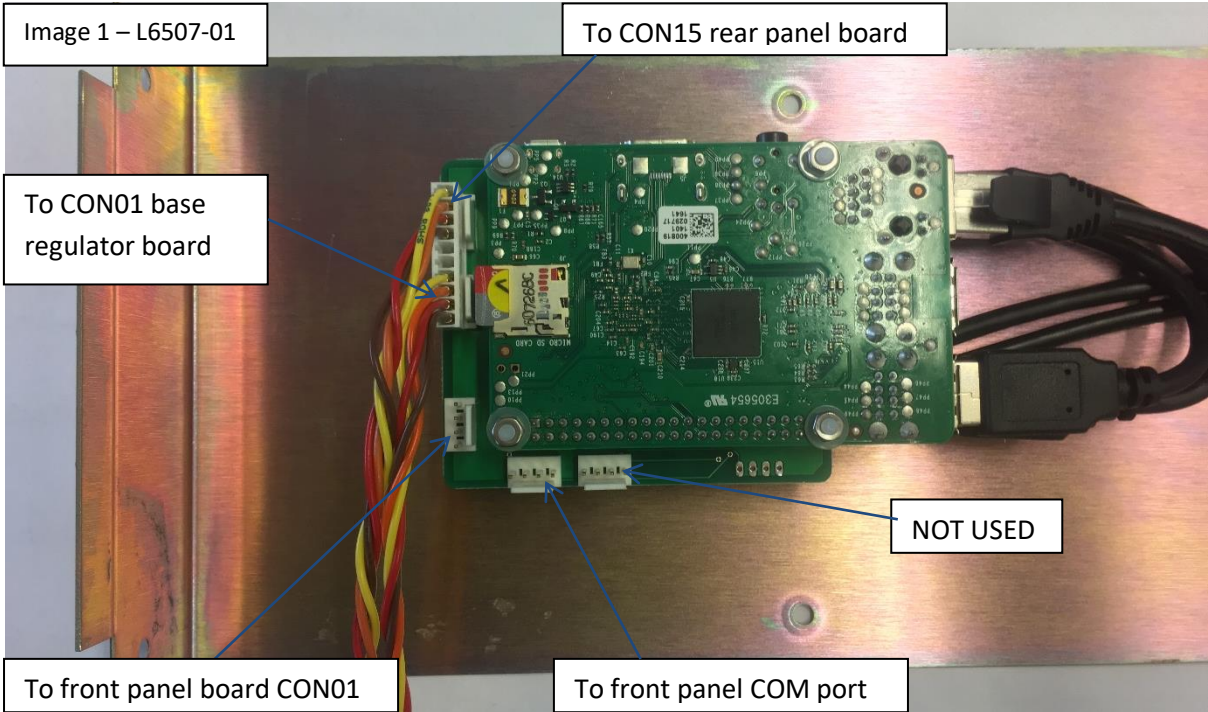
If the E2023 controller has a 4MHz crystal fitted to position XTAL-1 on the front panel board, it will need to be replaced with a **3.6864MHz** crystal. **This generally applies to units supplied before January 2006.**

Software versions lower than 4.2 will need to be updated by replacing the EPROM.

Software update kits, including the crystal, are available to purchase from Eddystone Broadcast.

INSTRUCTIONS:

- 1) Disconnect all rear panel cables from the E2023 and remove it from the rack.
- 2) Remove existing top cover (this will no longer be needed).
- 3) Remove the existing E2023 4 way cable between CON15 on the rear panel board and CON01 on the base mounted regulator board (see Image 2).
- 4) Connect the two L6507-01 long 4 way cables to the E2023, one to the rear panel board CON15 and one to the base mounted regulator PCB , as per the labels on Image 1.
- 5) Referring to Image 1 and 2, disconnect the E2023 COM port cable from the E2023 front panel board CON01 and connect it to the L6507-01. Connect the front panel board CON01 to the L6507-01 using the 4 way cable removed in step 3.
- 6) Carefully screw the L6507-01 to the E2023 ensuring that no cables are trapped.
- 7) Return the E2023 to the transmitter rack and connect all E2023 rear panel cables. Locally, the E2023 will operate as before the upgrade except the word 'rem' will flash in the top right corner of the LCD.



TCP/IP Instructions

1. CONNECTING TO THE E2023-05

The E2023-05 can be accessed by either of the following:

- 1) Optional Wi-Fi access point (if fitted) (see point 2)
- 2) Local Ethernet (see point 3)

2. CONNECTING TO E2023-05 OPTIONAL WI-FI ACCESS POINT

The E2023-05 can be accessed via the access point using any Wi-Fi enabled device running an internet browser.

- 1) On your Wi-Fi enabled device search for the wireless network: *TxPiXXXXXX (where XXXXXX is the last 6 digits of the controller serial number)*
- 2) Enter the following password: eddystone-broadcast
- 3) Once connected open your Wi-Fi enabled device internet browser and type the following IP address into the URL bar: 192.168.55.1

3. CONNECTING TO E2023-05 VIA LOCAL ETHERNET

The E2023-05 can be accessed via your internal local network.

- 1) Connect the E2023-05 to your local network using an Ethernet cable
- 2) Open your web browser and type the default IP address, located on the label on the controller front panel, into the URL bar.

4. CHANGING THE NETWORK SETTINGS

1) Changing the IP Address

- a. Connect to the E2023-05 via either of the above methods.
- b. Select **Configuration**
- c. Log in using an Admin account (see defaults below)
- d. To edit Select **Networking -> Network Configuration -> Network Interfaces**
- e. You can edit network settings in 2 modes
 - i. Boot Time – Settings changed in this tab will come into effect after the next reboot.
 - ii. Active – settings changed under this tab will come into effect immediately but will not persist after the next reboot – this is useful for testing purposes.
- f. To edit the local wired Ethernet settings select *eth0*, to edit Wi-Fi access point settings select *wlan0*.
- g. Amend the required settings and select **Save and Apply**

- h. Restart by selecting from the left hand menu **System > Bootup and Shutdown > Scroll to the bottom of the page and select Reboot System**
- i. Note – you may need to restart your browser after an IP address change.

Boot Time Interface Parameters

Name eth0

Activate at boot? Yes No

IPv4 address No address configured
 From DHCP
 From BOOTP
 Static configuration

IPv4 address
Netmask
Broadcast Automatic

IPv6 addresses IPv6 disabled
 From IPv6 discovery
 Static configuration

IPv6 address	Netmask
<input type="text"/>	<input type="text" value="64"/>

MTU Default

Virtual interfaces 0 (Add virtual interface)

Hardware address Default

2) Changing IP Routing and Gateways

- a. Connect to the E2023-05 via either of the above methods.
- b. Select **Configuration**
- c. Log in using an Admin account (see defaults below)
- d. To edit Select **Networking -> Network Configuration -> Routing and Gateways**
- e. The E2023-05 sets default gateways for each Network Interface Installed
- f. Under Default Routes
 - i. Select the interface you wish to assign a Gateway
 - ii. If assigning against wired Ethernet select eth0, if assigning against Wi-Fi select wlan0
 - iii. Enter the desired Gateway
- g. Select **Save**
- h. Restart by selecting from the left hand menu **System > Bootup and Shutdown > Scroll to the bottom of the page and select Reboot System**

Module Index Routing and Gateways

Boot time configuration Active configuration

This section allows you to configure the routes that are activated when the system boots up, or when network settings are fully re-applied.

Routing configuration activated at *boot time*

Default routes	Interface	Gateway	IPv6 gateway
	<input type="text"/>	<input type="text"/>	<input type="text"/>

Act as router? Yes No

Static routes	Interface	Network	Netmask	Gateway
	<input type="text"/>	<input type="text"/>	<input type="text"/>	<input type="text"/>

Local routes	Interface	Network	Netmask
	<input type="text"/>	<input type="text"/>	<input type="text"/>

[Return to network configuration](#)

3) Changing the Hostname and DNS settings

- a. Connect to the E2023-05 via either of the above methods.
- b. Select **Configuration**
- c. Log in using an Admin account (see defaults below)
- d. To edit Select **Networking -> Network Configuration -> Hostname and DNS Client**
- e. DNS servers are accessed in the order written
- f. Select **Save**
- g. Restart by selecting from the left hand menu **System > Bootup and Shutdown > Scroll to the bottom of the page and select Reboot System**

Module Index Hostname and DNS Client

DNS Client Options

Hostname

Resolution order:

DNS servers:

Search domains: None Listed ..

[Return to network configuration](#)

Hostname and DNS Client

5. DEFAULT CREDENTIALS

Username	Password	Group	Permission
admin	ebladmin	Admins	System config Tx Control
viewer	eblviewer	Viewers	Tx view only
operator	ebloperator	Operators	Tx View Tx Control

6. ADD/CHANGE USER SETTINGS

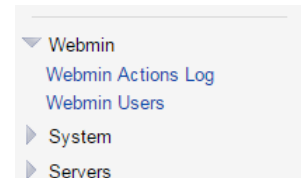
- 1) From the configuration side panel (right) select **Webmin > Webmin Users**
- 2) To add a new user select **Create a new Webmin user**
- 3) Enter Username
- 4) Select Group
- 5) Enter password
- 6) Select **Create**



Default Groups	
Admins	Full Control including all configuration
Operators	Transmitter view and control only

7. ADD/CHANGE GROUP SETTINGS

- 1) From the Dashboard select **Settings > Advanced**
- 2) From the side panel (right) select **Webmin > Webmin Users**
- 3) To add a new user group select **Create a new Webmin group**
- 4) Enter Group name
- 5) Select **Available Webmin Modules**
- 6) Select which modules this group is allowed access to. Hint - to allow access to dashboard select **Eddystone Dashboard**
- 7) Select **Create**



8. UPGRADE SYSTEM

Periodically Eddystone will release software updates accessible via the internet or via a USB (must be requested from EBL).

- 1) Update via internet
 - a. From the Dashboard select **Settings > Upgrade**
 - b. Select **Refresh Available Packages** (This may take a few minutes)
 - c. Select **Update Selected Packages**
 - d. Select **Install**
- 2) Update via USB
 - a. Request an update file from Eddystone or download new updates to USB stick from website
 - b. Insert USB
 - c. Select **Refresh Available Packages** (This may take a few minutes)
 - d. Select **Update Selected Packages**
 - e. Select **Install**

9. VIEWING THE TRANSMITTER DASHBOARD

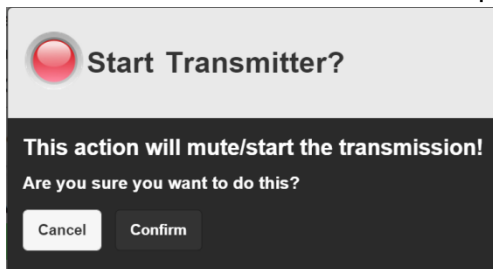
- 1) Connect the E2023-05 using either of the above methods

- 2) From the home screen select Dashboard
- 3) From the configuration menu select **Eddystone Transmitter > Transmitter Dashboard**

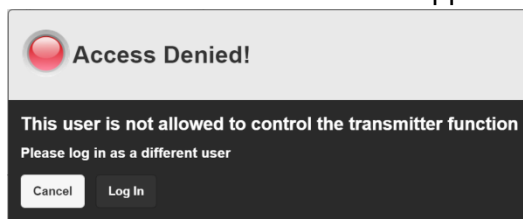
10. CONTROLLING THE TX FROM THE DASHBOARD

Power Control	
Control	What it does
Mute	Mutes the TX
Start	Starts the TX
High	Puts the TX into High Power
Low	Puts the TX into Low Power
Drive Control	
Control	What it does
Active	Places the Reserve Drive into Active mode
Passive	Places the Reserve Drive into Passive mode
Prefer A	Set the Primary Drive to Drive A
Prefer B	Set the Primary Drive to Drive B

- 1) Open the **Control** tab on the toolbar.
- 2) Click the Control you would like to adjust.
- 3) Click **Confirm** on the Text box that appears.



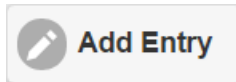
- a. IF an **Access Denied!** text box appears, click **Log In**



- b. On the following screen, enter your username and password (default is UN=admin PW=ebladmin).
- c. Select **Eddystone Broadcast > Transmitter Dashboard** to access the Dashboard.
- d. Repeat steps 1-3.

11. LOGGING AN EVENT

- 1) Open the **Log** tab on the toolbar.
- 2) Click the **Add Entry** tab on the top right of the list.



- 3) Enter the information required.

12. CHANGE WI-FI ACCESS POINT PARAMETERS

The E2023-05 comes standard with the Wi-Fi parameters set out in part 2. These parameters may be changed to suit the users needs. To change the SSID and PSK:

- 1) Open the **Settings** tab on the toolbar.
- 2) Open **Advanced** on the menu.
- 3) on the side menu, select **Servers > Host AP**
- 4) Adjust the SSID and Password.

13. ACCESSING THE HELP MENU

- 1) Open the **Help** tab on the toolbar.
- 2) Locate and select the correct Transmitter Model number and Document required.

The **Manual** is the general information and resource for each Transmitter.

The **Block Diagram** is a detailed diagram of the selected Transmitter and Components.

The **Circuit Diagram** is a diagram of the circuitry used in the Transmitter.

SNMP Guide

1. OVERVIEW

The new E2023-05 is fitted with SNMP as standard. This will allow seamless integration into customer proprietary software and monitoring equipment.

2. PARAMETERS

i. Config Parameters

SMI File (Supplied)	IDL-SMI
MIB File (Supplied)	EDDYSTONE-E2023-MIB
Read Community String	txview
Write Community String	txcontrol

ii. Tables

E2023_Tables	E2023_SensorsTables (not currently used)
	E2023_TransmittersTable
	E2023_Amplifiers

iii. Set Commands

Set Command	Integer
Low Power	76
High Power	72
Mute Tx	77
Start TX	83
Auto	84
Manual	89
Drive Passive	80
Drive Active	85
Drive A Reference	65
Drive B Reference	66

iv. Response List

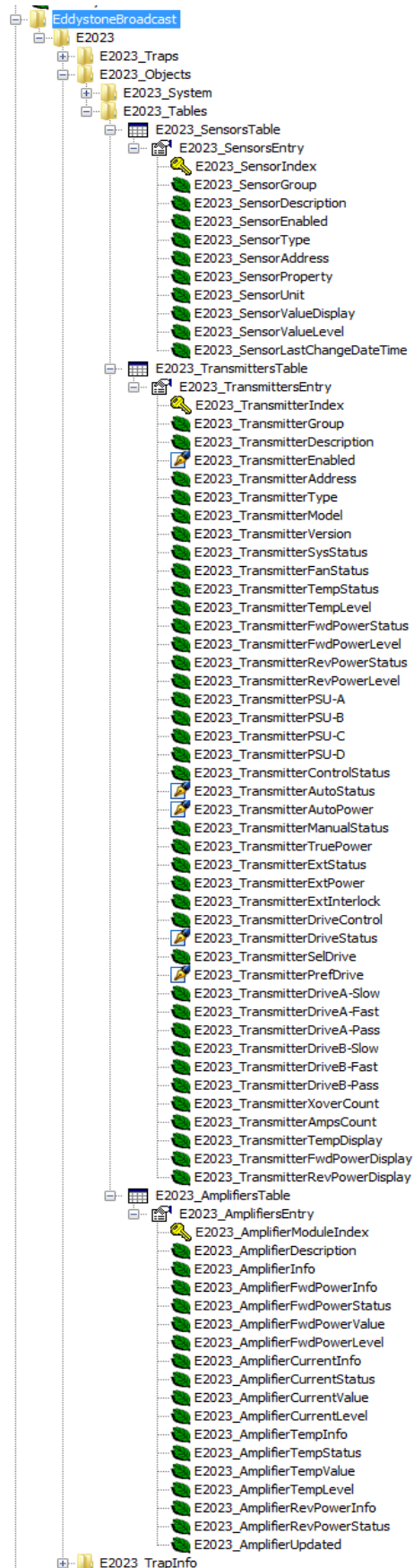
Response	Integer
Unknown	0
Missing	63
Fuse	69
Fail	70
Normal	78
NotNormal	79
Low	76
High	72
On	81
Off	82

Muted	77
Started	83
DeSelected	68
IntSelected	73
ExtSelected	86
Auto	84
Manual	89
Passive	80
Active	85
NotAvailable	87
NotPresent	88
NotApplicable	90

- v. Settable Values
 When setting OID send Integer value only

OID	Possible Values (integer)
E2023_TransmitterAutoStatus.1	Manual (89) / Auto (84)
E2023_TransmitterAutoPower.1	High (72) / Low (76)
E2023_TransmitterDriveStatus.1	Passive (80) / Active (85)
E2023_TransmitterPrefDrive.1	Drive A (65) / Drive B (66)

vi. MIB Tree



vii. OID Strings

Object Name	OID	Value Type	Typical Value
E2023_Serial	.1.3.6.1.4.1.35496.3.2.1.1.1.0	OctetString	b8:27:eb:ca:1a:13
E2023_CPUType	.1.3.6.1.4.1.35496.3.2.1.1.2.0	OctetString	None
E2023_CPUVer	.1.3.6.1.4.1.35496.3.2.1.1.3.0	OctetString	BCM2709
E2023_OS	.1.3.6.1.4.1.35496.3.2.1.1.4.0	OctetString	Linux-4.1.7-v7+-armv7l-with-debian-7.8
E2023_Firmware	.1.3.6.1.4.1.35496.3.2.1.1.5.0	OctetString	None
E2023_Type	.1.3.6.1.4.1.35496.3.2.1.1.6.0	OctetString	E2023
E2023_Role	.1.3.6.1.4.1.35496.3.2.1.1.7.0	OctetString	Active
E2023_Description	.1.3.6.1.4.1.35496.3.2.1.1.8.0	OctetString	Transmitter Controller
E2023_Note	.1.3.6.1.4.1.35496.3.2.1.1.9.0	OctetString	Extended
E2023_ControlMode	.1.3.6.1.4.1.35496.3.2.1.1.10.0	Integer	Remote (0)
E2023_FunctionMode	.1.3.6.1.4.1.35496.3.2.1.1.11.0	Integer	Auto (0)
E2023_HasWarning	.1.3.6.1.4.1.35496.3.2.1.1.12.0	Integer	true (1)
E2023_HasAlarm	.1.3.6.1.4.1.35496.3.2.1.1.13.0	Integer	true (1)
E2023_IsAudible	.1.3.6.1.4.1.35496.3.2.1.1.14.0	Integer	true (1)
E2023_ExecTime	.1.3.6.1.4.1.35496.3.2.1.1.15.0	TimeTicks	333 hours 57 minutes 21 seconds (120224140)
E2023_TransmitterIndex.1	.1.3.6.1.4.1.35496.3.2.1.2.7.1.1.1	Counter32	1
E2023_TransmitterGroup.1	.1.3.6.1.4.1.35496.3.2.1.2.7.1.2.1	Counter32	0
E2023_TransmitterDescription.1	.1.3.6.1.4.1.35496.3.2.1.2.7.1.3.1	OctetString	E2023
E2023_TransmitterEnabled.1	.1.3.6.1.4.1.35496.3.2.1.2.7.1.4.1	Integer	true (1)
E2023_TransmitterAddress.1	.1.3.6.1.4.1.35496.3.2.1.2.7.1.5.1	OctetString	/dev/ttyAMA0:9600
E2023_TransmitterType.1	.1.3.6.1.4.1.35496.3.2.1.2.7.1.6.1	OctetString	7
E2023_TransmitterModel.1	.1.3.6.1.4.1.35496.3.2.1.2.7.1.7.1	OctetString	S7605C
E2023_TransmitterVersion.1	.1.3.6.1.4.1.35496.3.2.1.2.7.1.8.1	OctetString	4.5
E2023_TransmitterSysStatus.1	.1.3.6.1.4.1.35496.3.2.1.2.7.1.9.1	Integer	Abnormal (79)
E2023_TransmitterFanStatus.1	.1.3.6.1.4.1.35496.3.2.1.2.7.1.10.1	Integer	NotPresent (88)
E2023_TransmitterTempStatus.1	.1.3.6.1.4.1.35496.3.2.1.2.7.1.11.1	Integer	NotPresent (88)
E2023_TransmitterTempLevel.1	.1.3.6.1.4.1.35496.3.2.1.2.7.1.12.1	Gauge	0
E2023_TransmitterFwdPowerStatus.1	.1.3.6.1.4.1.35496.3.2.1.2.7.1.13.1	Integer	NotPresent (88)
E2023_TransmitterFwdPowerLevel.1	.1.3.6.1.4.1.35496.3.2.1.2.7.1.14.1	Gauge	0
E2023_TransmitterRevPowerStatus.1	.1.3.6.1.4.1.35496.3.2.1.2.7.1.15.1	Integer	NotPresent (88)
E2023_TransmitterRevPowerLevel.1	.1.3.6.1.4.1.35496.3.2.1.2.7.1.16.1	Gauge	0
E2023_TransmitterPSU-A.1	.1.3.6.1.4.1.35496.3.2.1.2.7.1.17.1	Integer	Fail (70)
E2023_TransmitterPSU-B.1	.1.3.6.1.4.1.35496.3.2.1.2.7.1.18.1	Integer	Fail (70)
E2023_TransmitterPSU-C.1	.1.3.6.1.4.1.35496.3.2.1.2.7.1.19.1	Integer	Fail (70)
E2023_TransmitterPSU-D.1	.1.3.6.1.4.1.35496.3.2.1.2.7.1.20.1	Integer	Fail (70)
E2023_TransmitterControlStatus.1	.1.3.6.1.4.1.35496.3.2.1.2.7.1.21.1	Integer	Manual (89)
E2023_TransmitterAutoStatus.1	.1.3.6.1.4.1.35496.3.2.1.2.7.1.22.1	Integer	Started (83)
E2023_TransmitterAutoPower.1	.1.3.6.1.4.1.35496.3.2.1.2.7.1.23.1	Integer	High (72)
E2023_TransmitterManualStatus.1	.1.3.6.1.4.1.35496.3.2.1.2.7.1.24.1	Integer	Unknown (0)
E2023_TransmitterTruePower.1	.1.3.6.1.4.1.35496.3.2.1.2.7.1.25.1	Integer	NotPresent (88)
E2023_TransmitterExtStatus.1	.1.3.6.1.4.1.35496.3.2.1.2.7.1.26.1	Integer	Started (83)
E2023_TransmitterExtPower.1	.1.3.6.1.4.1.35496.3.2.1.2.7.1.27.1	Integer	High (72)
E2023_TransmitterExtInterlock.1	.1.3.6.1.4.1.35496.3.2.1.2.7.1.28.1	Integer	Muted (77)
E2023_TransmitterDriveControl.1	.1.3.6.1.4.1.35496.3.2.1.2.7.1.29.1	Integer	Manual (89)
E2023_TransmitterDriveStatus.1	.1.3.6.1.4.1.35496.3.2.1.2.7.1.30.1	Integer	Passive (80)
E2023_TransmitterSelDrive.1	.1.3.6.1.4.1.35496.3.2.1.2.7.1.31.1	Integer	65
E2023_TransmitterPrefDrive.1	.1.3.6.1.4.1.35496.3.2.1.2.7.1.32.1	Integer	66

E2023_TransmitterDriveA-Slow.1	.1.3.6.1.4.1.35496.3.2.1.2.7.1.33.1	Integer	Fail (70)
E2023_TransmitterDriveA-Fast.1	.1.3.6.1.4.1.35496.3.2.1.2.7.1.34.1	Integer	Fail (70)
E2023_TransmitterDriveA-Pass.1	.1.3.6.1.4.1.35496.3.2.1.2.7.1.35.1	Integer	Fail (70)
E2023_TransmitterDriveB-Slow.1	.1.3.6.1.4.1.35496.3.2.1.2.7.1.36.1	Integer	Fail (70)
E2023_TransmitterDriveB-Fast.1	.1.3.6.1.4.1.35496.3.2.1.2.7.1.37.1	Integer	Fail (70)
E2023_TransmitterDriveB-Pass.1	.1.3.6.1.4.1.35496.3.2.1.2.7.1.38.1	Integer	Fail (70)
E2023_TransmitterXoverCount.1	.1.3.6.1.4.1.35496.3.2.1.2.7.1.39.1	Counter32	0
E2023_TransmitterAmpsCount.1	.1.3.6.1.4.1.35496.3.2.1.2.7.1.40.1	Counter32	16
E2023_TransmitterTempDisplay.1	.1.3.6.1.4.1.35496.3.2.1.2.7.1.41.1	OctetString	XXX
E2023_TransmitterFwdPowerDisplay.1	.1.3.6.1.4.1.35496.3.2.1.2.7.1.42.1	OctetString	XXXX
E2023_TransmitterRevPowerDisplay.1	.1.3.6.1.4.1.35496.3.2.1.2.7.1.43.1	OctetString	XXX
E2023_AmplifierModuleIndex.1	.1.3.6.1.4.1.35496.3.2.1.2.8.1.2.1	Counter32	1
E2023_AmplifierModuleIndex.2	.1.3.6.1.4.1.35496.3.2.1.2.8.1.2.2	Counter32	2
E2023_AmplifierModuleIndex.3	.1.3.6.1.4.1.35496.3.2.1.2.8.1.2.3	Counter32	3
E2023_AmplifierModuleIndex.4	.1.3.6.1.4.1.35496.3.2.1.2.8.1.2.4	Counter32	4
E2023_AmplifierModuleIndex.5	.1.3.6.1.4.1.35496.3.2.1.2.8.1.2.5	Counter32	5
E2023_AmplifierModuleIndex.6	.1.3.6.1.4.1.35496.3.2.1.2.8.1.2.6	Counter32	6
E2023_AmplifierModuleIndex.7	.1.3.6.1.4.1.35496.3.2.1.2.8.1.2.7	Counter32	7
E2023_AmplifierModuleIndex.8	.1.3.6.1.4.1.35496.3.2.1.2.8.1.2.8	Counter32	8
E2023_AmplifierModuleIndex.9	.1.3.6.1.4.1.35496.3.2.1.2.8.1.2.9	Counter32	9
E2023_AmplifierModuleIndex.10	.1.3.6.1.4.1.35496.3.2.1.2.8.1.2.10	Counter32	10
E2023_AmplifierModuleIndex.11	.1.3.6.1.4.1.35496.3.2.1.2.8.1.2.11	Counter32	11
E2023_AmplifierModuleIndex.12	.1.3.6.1.4.1.35496.3.2.1.2.8.1.2.12	Counter32	12
E2023_AmplifierModuleIndex.13	.1.3.6.1.4.1.35496.3.2.1.2.8.1.2.13	Counter32	13
E2023_AmplifierModuleIndex.14	.1.3.6.1.4.1.35496.3.2.1.2.8.1.2.14	Counter32	14
E2023_AmplifierModuleIndex.15	.1.3.6.1.4.1.35496.3.2.1.2.8.1.2.15	Counter32	15
E2023_AmplifierModuleIndex.16	.1.3.6.1.4.1.35496.3.2.1.2.8.1.2.16	Counter32	16
E2023_AmplifierDescription.1	.1.3.6.1.4.1.35496.3.2.1.2.8.1.3.1	OctetString	E2021
E2023_AmplifierDescription.2	.1.3.6.1.4.1.35496.3.2.1.2.8.1.3.2	OctetString	E2021
E2023_AmplifierDescription.3	.1.3.6.1.4.1.35496.3.2.1.2.8.1.3.3	OctetString	E2021
E2023_AmplifierDescription.4	.1.3.6.1.4.1.35496.3.2.1.2.8.1.3.4	OctetString	E2021
E2023_AmplifierDescription.5	.1.3.6.1.4.1.35496.3.2.1.2.8.1.3.5	OctetString	E2021
E2023_AmplifierDescription.6	.1.3.6.1.4.1.35496.3.2.1.2.8.1.3.6	OctetString	E2021
E2023_AmplifierDescription.7	.1.3.6.1.4.1.35496.3.2.1.2.8.1.3.7	OctetString	E2021
E2023_AmplifierDescription.8	.1.3.6.1.4.1.35496.3.2.1.2.8.1.3.8	OctetString	E2021
E2023_AmplifierDescription.9	.1.3.6.1.4.1.35496.3.2.1.2.8.1.3.9	OctetString	E2021
E2023_AmplifierDescription.10	.1.3.6.1.4.1.35496.3.2.1.2.8.1.3.10	OctetString	E2021
E2023_AmplifierDescription.11	.1.3.6.1.4.1.35496.3.2.1.2.8.1.3.11	OctetString	E2021
E2023_AmplifierDescription.12	.1.3.6.1.4.1.35496.3.2.1.2.8.1.3.12	OctetString	E2021
E2023_AmplifierDescription.13	.1.3.6.1.4.1.35496.3.2.1.2.8.1.3.13	OctetString	E2021
E2023_AmplifierDescription.14	.1.3.6.1.4.1.35496.3.2.1.2.8.1.3.14	OctetString	E2021
E2023_AmplifierDescription.15	.1.3.6.1.4.1.35496.3.2.1.2.8.1.3.15	OctetString	E2021
E2023_AmplifierDescription.16	.1.3.6.1.4.1.35496.3.2.1.2.8.1.3.16	OctetString	E2021
E2023_AmplifierInfo.1	.1.3.6.1.4.1.35496.3.2.1.2.8.1.4.1	OctetString	XXXXXXXXXXXXX X
E2023_AmplifierInfo.2	.1.3.6.1.4.1.35496.3.2.1.2.8.1.4.2	OctetString	XXXXXXXXXXXXX X
E2023_AmplifierInfo.3	.1.3.6.1.4.1.35496.3.2.1.2.8.1.4.3	OctetString	XXXXXXXXXXXXX X
E2023_AmplifierInfo.4	.1.3.6.1.4.1.35496.3.2.1.2.8.1.4.4	OctetString	XXXXXXXXXXXXX X
E2023_AmplifierInfo.5	.1.3.6.1.4.1.35496.3.2.1.2.8.1.4.5	OctetString	XXXXXXXXXXXXX X
E2023_AmplifierInfo.6	.1.3.6.1.4.1.35496.3.2.1.2.8.1.4.6	OctetString	XXXXXXXXXXXXX X

E2023_AmplifierCurrentStatus.11	.1.3.6.1.4.1.35496.3.2.1.2.8.1.10.11	Integer	NotPresent (88)
E2023_AmplifierCurrentStatus.12	.1.3.6.1.4.1.35496.3.2.1.2.8.1.10.12	Integer	NotPresent (88)
E2023_AmplifierCurrentStatus.13	.1.3.6.1.4.1.35496.3.2.1.2.8.1.10.13	Integer	NotPresent (88)
E2023_AmplifierCurrentStatus.14	.1.3.6.1.4.1.35496.3.2.1.2.8.1.10.14	Integer	NotPresent (88)
E2023_AmplifierCurrentStatus.15	.1.3.6.1.4.1.35496.3.2.1.2.8.1.10.15	Integer	NotPresent (88)
E2023_AmplifierCurrentStatus.16	.1.3.6.1.4.1.35496.3.2.1.2.8.1.10.16	Integer	NotPresent (88)
E2023_AmplifierCurrentValue.1	.1.3.6.1.4.1.35496.3.2.1.2.8.1.11.1	OctetString	XXXX
E2023_AmplifierCurrentValue.2	.1.3.6.1.4.1.35496.3.2.1.2.8.1.11.2	OctetString	XXXX
E2023_AmplifierCurrentValue.3	.1.3.6.1.4.1.35496.3.2.1.2.8.1.11.3	OctetString	XXXX
E2023_AmplifierCurrentValue.4	.1.3.6.1.4.1.35496.3.2.1.2.8.1.11.4	OctetString	XXXX
E2023_AmplifierCurrentValue.5	.1.3.6.1.4.1.35496.3.2.1.2.8.1.11.5	OctetString	XXXX
E2023_AmplifierCurrentValue.6	.1.3.6.1.4.1.35496.3.2.1.2.8.1.11.6	OctetString	XXXX
E2023_AmplifierCurrentValue.7	.1.3.6.1.4.1.35496.3.2.1.2.8.1.11.7	OctetString	XXXX
E2023_AmplifierCurrentValue.8	.1.3.6.1.4.1.35496.3.2.1.2.8.1.11.8	OctetString	XXXX
E2023_AmplifierCurrentValue.9	.1.3.6.1.4.1.35496.3.2.1.2.8.1.11.9	OctetString	XXXX
E2023_AmplifierCurrentValue.10	.1.3.6.1.4.1.35496.3.2.1.2.8.1.11.10	OctetString	XXXX
E2023_AmplifierCurrentValue.11	.1.3.6.1.4.1.35496.3.2.1.2.8.1.11.11	OctetString	XXXX
E2023_AmplifierCurrentValue.12	.1.3.6.1.4.1.35496.3.2.1.2.8.1.11.12	OctetString	XXXX
E2023_AmplifierCurrentValue.13	.1.3.6.1.4.1.35496.3.2.1.2.8.1.11.13	OctetString	XXXX
E2023_AmplifierCurrentValue.14	.1.3.6.1.4.1.35496.3.2.1.2.8.1.11.14	OctetString	XXXX
E2023_AmplifierCurrentValue.15	.1.3.6.1.4.1.35496.3.2.1.2.8.1.11.15	OctetString	XXXX
E2023_AmplifierCurrentValue.16	.1.3.6.1.4.1.35496.3.2.1.2.8.1.11.16	OctetString	XXXX
E2023_AmplifierCurrentLevel.1	.1.3.6.1.4.1.35496.3.2.1.2.8.1.12.1	Gauge	0
E2023_AmplifierCurrentLevel.2	.1.3.6.1.4.1.35496.3.2.1.2.8.1.12.2	Gauge	0
E2023_AmplifierCurrentLevel.3	.1.3.6.1.4.1.35496.3.2.1.2.8.1.12.3	Gauge	0
E2023_AmplifierCurrentLevel.4	.1.3.6.1.4.1.35496.3.2.1.2.8.1.12.4	Gauge	0
E2023_AmplifierCurrentLevel.5	.1.3.6.1.4.1.35496.3.2.1.2.8.1.12.5	Gauge	0
E2023_AmplifierCurrentLevel.6	.1.3.6.1.4.1.35496.3.2.1.2.8.1.12.6	Gauge	0
E2023_AmplifierCurrentLevel.7	.1.3.6.1.4.1.35496.3.2.1.2.8.1.12.7	Gauge	0
E2023_AmplifierCurrentLevel.8	.1.3.6.1.4.1.35496.3.2.1.2.8.1.12.8	Gauge	0
E2023_AmplifierCurrentLevel.9	.1.3.6.1.4.1.35496.3.2.1.2.8.1.12.9	Gauge	0
E2023_AmplifierCurrentLevel.10	.1.3.6.1.4.1.35496.3.2.1.2.8.1.12.10	Gauge	0
E2023_AmplifierCurrentLevel.11	.1.3.6.1.4.1.35496.3.2.1.2.8.1.12.11	Gauge	0
E2023_AmplifierCurrentLevel.12	.1.3.6.1.4.1.35496.3.2.1.2.8.1.12.12	Gauge	0
E2023_AmplifierCurrentLevel.13	.1.3.6.1.4.1.35496.3.2.1.2.8.1.12.13	Gauge	0
E2023_AmplifierCurrentLevel.14	.1.3.6.1.4.1.35496.3.2.1.2.8.1.12.14	Gauge	0
E2023_AmplifierCurrentLevel.15	.1.3.6.1.4.1.35496.3.2.1.2.8.1.12.15	Gauge	0
E2023_AmplifierCurrentLevel.16	.1.3.6.1.4.1.35496.3.2.1.2.8.1.12.16	Gauge	0
E2023_AmplifierTempInfo.1	.1.3.6.1.4.1.35496.3.2.1.2.8.1.13.1	OctetString	X
E2023_AmplifierTempInfo.2	.1.3.6.1.4.1.35496.3.2.1.2.8.1.13.2	OctetString	X
E2023_AmplifierTempInfo.3	.1.3.6.1.4.1.35496.3.2.1.2.8.1.13.3	OctetString	X
E2023_AmplifierTempInfo.4	.1.3.6.1.4.1.35496.3.2.1.2.8.1.13.4	OctetString	X
E2023_AmplifierTempInfo.5	.1.3.6.1.4.1.35496.3.2.1.2.8.1.13.5	OctetString	X
E2023_AmplifierTempInfo.6	.1.3.6.1.4.1.35496.3.2.1.2.8.1.13.6	OctetString	X

E2023_AmplifierTempInfo.7	.1.3.6.1.4.1.35496.3.2.1.2.8.1.13.7	OctetString	X
E2023_AmplifierTempInfo.8	.1.3.6.1.4.1.35496.3.2.1.2.8.1.13.8	OctetString	X
E2023_AmplifierTempInfo.9	.1.3.6.1.4.1.35496.3.2.1.2.8.1.13.9	OctetString	X
E2023_AmplifierTempInfo.10	.1.3.6.1.4.1.35496.3.2.1.2.8.1.13.10	OctetString	X
E2023_AmplifierTempInfo.11	.1.3.6.1.4.1.35496.3.2.1.2.8.1.13.11	OctetString	X
E2023_AmplifierTempInfo.12	.1.3.6.1.4.1.35496.3.2.1.2.8.1.13.12	OctetString	X
E2023_AmplifierTempInfo.13	.1.3.6.1.4.1.35496.3.2.1.2.8.1.13.13	OctetString	X
E2023_AmplifierTempInfo.14	.1.3.6.1.4.1.35496.3.2.1.2.8.1.13.14	OctetString	X
E2023_AmplifierTempInfo.15	.1.3.6.1.4.1.35496.3.2.1.2.8.1.13.15	OctetString	X
E2023_AmplifierTempInfo.16	.1.3.6.1.4.1.35496.3.2.1.2.8.1.13.16	OctetString	X
E2023_AmplifierTempStatus.1	.1.3.6.1.4.1.35496.3.2.1.2.8.1.14.1	Integer	NotPresent (88)
E2023_AmplifierTempStatus.2	.1.3.6.1.4.1.35496.3.2.1.2.8.1.14.2	Integer	NotPresent (88)
E2023_AmplifierTempStatus.3	.1.3.6.1.4.1.35496.3.2.1.2.8.1.14.3	Integer	NotPresent (88)
E2023_AmplifierTempStatus.4	.1.3.6.1.4.1.35496.3.2.1.2.8.1.14.4	Integer	NotPresent (88)
E2023_AmplifierTempStatus.5	.1.3.6.1.4.1.35496.3.2.1.2.8.1.14.5	Integer	NotPresent (88)
E2023_AmplifierTempStatus.6	.1.3.6.1.4.1.35496.3.2.1.2.8.1.14.6	Integer	NotPresent (88)
E2023_AmplifierTempStatus.7	.1.3.6.1.4.1.35496.3.2.1.2.8.1.14.7	Integer	NotPresent (88)
E2023_AmplifierTempStatus.8	.1.3.6.1.4.1.35496.3.2.1.2.8.1.14.8	Integer	NotPresent (88)
E2023_AmplifierTempStatus.9	.1.3.6.1.4.1.35496.3.2.1.2.8.1.14.9	Integer	NotPresent (88)
E2023_AmplifierTempStatus.10	.1.3.6.1.4.1.35496.3.2.1.2.8.1.14.10	Integer	NotPresent (88)
E2023_AmplifierTempStatus.11	.1.3.6.1.4.1.35496.3.2.1.2.8.1.14.11	Integer	NotPresent (88)
E2023_AmplifierTempStatus.12	.1.3.6.1.4.1.35496.3.2.1.2.8.1.14.12	Integer	NotPresent (88)
E2023_AmplifierTempStatus.13	.1.3.6.1.4.1.35496.3.2.1.2.8.1.14.13	Integer	NotPresent (88)
E2023_AmplifierTempStatus.14	.1.3.6.1.4.1.35496.3.2.1.2.8.1.14.14	Integer	NotPresent (88)
E2023_AmplifierTempStatus.15	.1.3.6.1.4.1.35496.3.2.1.2.8.1.14.15	Integer	NotPresent (88)
E2023_AmplifierTempStatus.16	.1.3.6.1.4.1.35496.3.2.1.2.8.1.14.16	Integer	NotPresent (88)
E2023_AmplifierTempValue.1	.1.3.6.1.4.1.35496.3.2.1.2.8.1.15.1	OctetString	XXX
E2023_AmplifierTempValue.2	.1.3.6.1.4.1.35496.3.2.1.2.8.1.15.2	OctetString	XXX
E2023_AmplifierTempValue.3	.1.3.6.1.4.1.35496.3.2.1.2.8.1.15.3	OctetString	XXX
E2023_AmplifierTempValue.4	.1.3.6.1.4.1.35496.3.2.1.2.8.1.15.4	OctetString	XXX
E2023_AmplifierTempValue.5	.1.3.6.1.4.1.35496.3.2.1.2.8.1.15.5	OctetString	XXX
E2023_AmplifierTempValue.6	.1.3.6.1.4.1.35496.3.2.1.2.8.1.15.6	OctetString	XXX
E2023_AmplifierTempValue.7	.1.3.6.1.4.1.35496.3.2.1.2.8.1.15.7	OctetString	XXX
E2023_AmplifierTempValue.8	.1.3.6.1.4.1.35496.3.2.1.2.8.1.15.8	OctetString	XXX
E2023_AmplifierTempValue.9	.1.3.6.1.4.1.35496.3.2.1.2.8.1.15.9	OctetString	XXX
E2023_AmplifierTempValue.10	.1.3.6.1.4.1.35496.3.2.1.2.8.1.15.10	OctetString	XXX
E2023_AmplifierTempValue.11	.1.3.6.1.4.1.35496.3.2.1.2.8.1.15.11	OctetString	XXX